

Large Structural Foam Front Housing With Straight Injection Pin Cradle



Covers are produced for a commercial ATM and used by financial institutions in a secure setting.

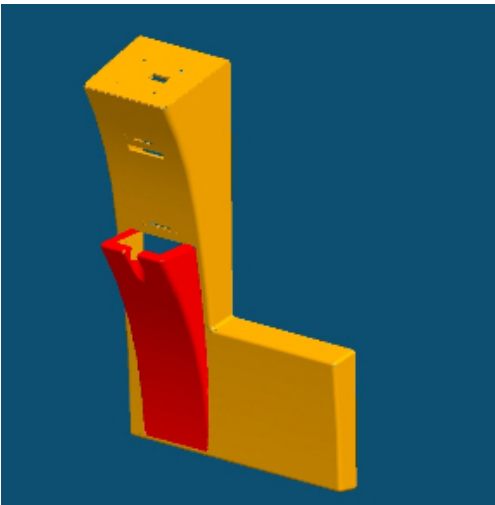
- Finished part is priced very competitively and includes molding & painting. Tooling cost was only slightly higher than an Asian competitor which the client had utilized for years.
- We provided DFM feedback & suggestions to support material selection.

Material

- Glass Filled Polycarbonate & a UL rated PC/ABS.

Tooling

- Tooling is aluminum for the fascia & P20 for the pin pad cradle. Original quote utilized P20. In an effort to reduce tooling cost, we worked with the client to understand future volumes & determined aluminum tooling was acceptable. The lead time was seven weeks.



Lupton Associates offers the proven ability to provide integrated solutions that meet the demands of design, time to market and product cost objectives.

The solutions we provide include:

- Prototyping
- Stamping
- Metal Fabrication
- Machined Components
- Polymeric Molding
- Electronic Manufacturing Services
- Casting

For more information, please visit www.luptons.com.